

Fig no. N650 Full Bore
1/4" ~ 4" DN 8- DN 100



Features :

Investment Casting
 Blow out proof stem, In-line Maintenance
 For Chemical, Industrial Application
 Carbon Steel or Super Alloy upon request

Standard Compliance :

Body wall thickness : ASTM B16.34
 Threaded end : ANSI B1.20.1(NPT)

BSP
 BSPT
 DIN259
 DIN 2999

Face to Face : MD's Standard
 Body Material : ASTM A351 GR.CF8M
 Pressure Testing : API 598

Specification

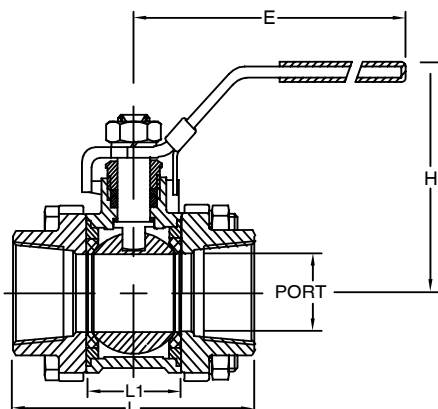
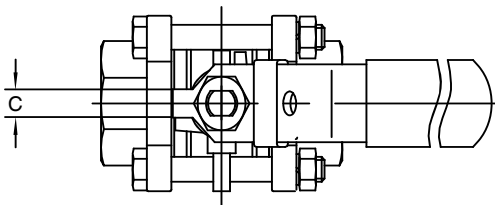
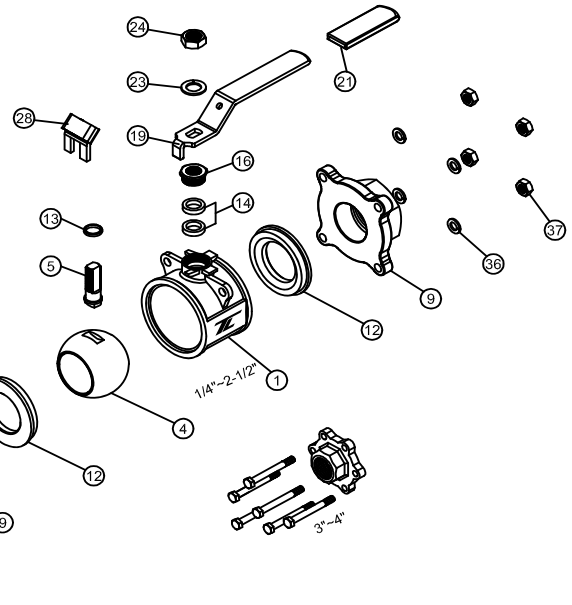
End Connection : Threaded end
 Working Pressure : 1000PSI (CWP) for 1/4" ~ 2"
 800PSI (CWP) for 2-1/2" ~ 4"
 Temperature : -20 ~ 180° C

Option :

1. Locking Device Handle

MATERIALS LIST

NO.	PART NAME	MATERIAL
1	BODY	ASTM A351 Gr.CF8M
4	BALL	ASTM A351 Gr.CF8M
5	STEM	SS316
9	END CAP	ASTM A351 Gr.CF8M
12	SEAT	RTFE./PTFE.
13	THRUST WASHER	PTFE.
14	STEM PACKING	PTFE.
16	GLAND NUT	SS304
19	HANDLE	SS304
21	HANDLE COVER	PLASTIC
23	HANDLE WASHER	SS304
24	HANDLE NUT	SS304
28	LOCKING DEVICE	SS304 (OPTION)
35	BODY BOLT	SS304
36	BOLT WASHER	SS304
37	BOLT NUT	SS304



DIMENSIONS

		unit:mm					
SIZE	PORT	L	L1	E	H	C	
DN8	1/4"	11.6	56.6	18.6	102.0	54.0	5.0
DN10	3/8"	12.7	56.6	18.6	102.0	54.0	5.0
DN15	1/2"	15.0	65.7	23.6	132.0	64.0	6.5
DN20	3/4"	20.0	76.2	28.0	132.0	67.0	6.5
DN25	1"	25.0	86.2	33.9	167.0	75.0	8.0
DN32	1-1/4"	32.0	102.8	42.5	167.0	80.0	8.0
DN40	1-1/2"	38.0	119.4	53.2	192.0	90.0	9.7
DN50	2"	50.0	131.4	64.6	192.0	98.0	9.7
DN65	2-1/2"	65.0	164.0	87.0	252.0	137.0	12.0
DN80	3"	80.0	182.7	99.0	252.0	147.0	12.0
DN100	4"	100.0	235.6	127.0	282.0	175.0	15.0

WORKING PRESSURE: 1/4"~2" 1000PSI
 2-1/2"~4" 800PSI